

GRAVELLY

Model "L" Tractor

PARTS AND PRICE LIST

Effective Jan. 1, 1956

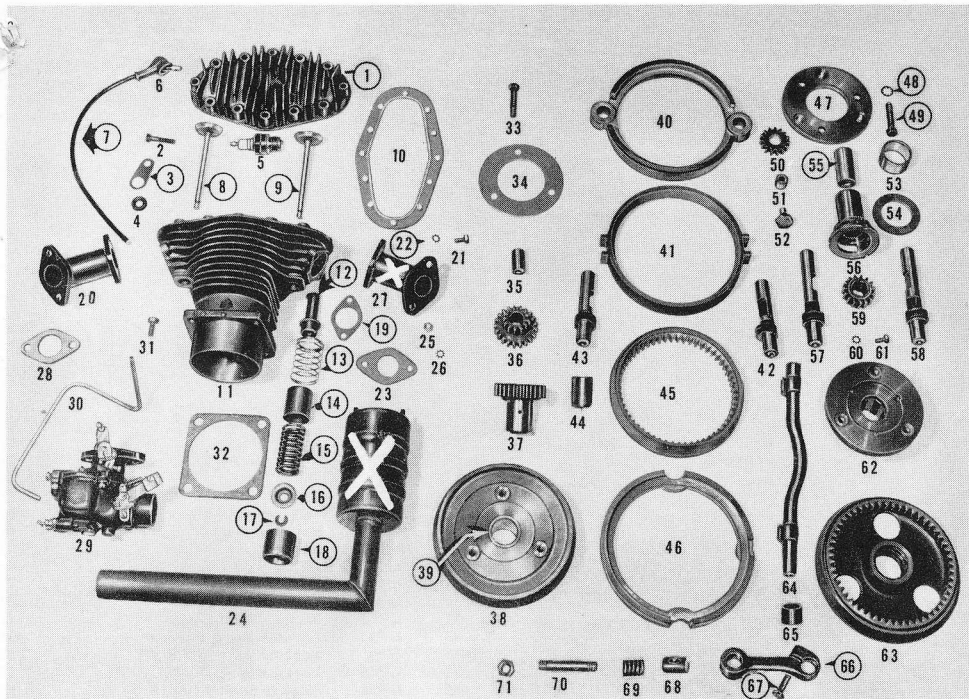


PLATE A

Motor and Pin Plate Assembly

Photo No.	Part No.	Description	Price	Photo No.	Part No.	Description	Price
	5734	Cylinder Head	5.25	11	5733	Cylinder	21.38
	154-S	Cylinder Head Bolt	.05	12	5737	Valve Guide	.89
3	L 826	Cable Bracket	.13	13	L 318	Sleeve Spring	.16
4	L 827	Rubber Grommet	.05	14	L 315	Upper Spring Sleeve	.35
5	1709	Spark Plug	.76	15	L 312	Valve Spring	.22
6	1726	Spark Plug Nipple	.25	16	5741	Valve Spring Cap	.13
7	1731	Magneto Cable, Complete	.38	17	5742	Valve Spring Cap Key	.07
8	L 311-N	Valve, Intake	.85	18	L 316	Lower Spring Sleeve	.35
9	L 311-X	Valve, Exhaust	.98	19	L 407-B	Manifold Gasket	.05
10	5735	Cylinder Head Gasket	.61	20	L 301-A	Manifold, Intake	1.51

Photo No.	Part No.	Description	Price
21	164-S	Manifold Bolt	.02
22	303-W	Manifold Bolt Lock Washer	.01
23	L-301-M	Muffler Gasket	.05
24	L-816	Muffler (Obsolete muffler shown new style furnished)	1.88
25	202-NG	Muffler Securing Nut, Graphited	.02
26	303-W	Muffler Sec. Nut Lock Washer	.01
27	L-301-D	Manifold, Exhaust (Obsolete manifold shown. New style furnished)	1.51
28	L 301-B	Zenith Carburetor Gasket	.05
29	L 806-Z	Carburetor-Zenith	14.13
30	L 706	Gas Tube (Carburetor)	.20
31	126-S	Carburetor Bolt	.05
32	L 317	Cylinder Bottom Gasket	.08
33	L 516-L	Spacer Bolt, Left Hand	.17
NS	305-WL	Spacer Lock Washer, Left Hand	.02
34	L 515	Pin Spacer	.38
35	L 514	Orbit Gear Pin	.22
36	L 513	Orbit Gear	2.10
37	L 511	Sun Gear	3.90
38	L 506	Rear Pin Plate	4.17
39	L 535	Rear Pin Plate Bushing	.51
40	L 502	Rear Spacer	4.90
41	L 503	Clutch Cup	4.20
42	L 711-R	Clutch Slide Rod, Short	1.67
43	L 711-L	Clutch Slide Rod, Short	1.67
44	L 714	Slide Rod Bushing	.45
45	L 501	Internal Gear	3.57
46	L 508	Gear Cup	3.75
47	L 539	Front Pin Spacer	2.76
48	305-W	Spacer Lock Washer	.01
49	L 516-R	Spacer Bolt, Right Hand	.17
50	L 540	Reverse Idler	1.35
51	L 541	Reverse Idler Bushing	.14
52	L 542	Reverse Idler Bolt	.13
53	L 532	Quill Bearing	.45
54	L 520	Front Thrust Plate	.80
55	L 546	Pinion Shaft Bearing	.40
56	L 536	Pin Plate Quill	3.90
57	L 710-L	Clutch Slide Rod, Long	1.78
58	L 710-R	Clutch Slide Rod, Long	1.78
59	L 510	Sun Pintion	1.20
60	303-W	Quill Securing Bolt Washer	.01
61	191-S	Quill Securing Bolt	.03
62	L 505	Front Pin Plate	3.36
63	L 537&8	Reverse Cone Assembly	8.02
64	L 712	Clutch Actuating Shaft	2.61
65	L 713	Actuating Shaft Bushing	.22
66	L 715	Actuating Shaft Lever	1.17
67	154-S	Actuating Lever Clamp Bolt	.05
68	L 723	Clutch Rod Pivot	.35
69	L 729	Clutch Spring	.13
70	L 730	Spring Sleeve	.28
71	210-N	Clutch Spring Sleeve Nut	.04
NS	L 534	Sun Gear Bushing	.33

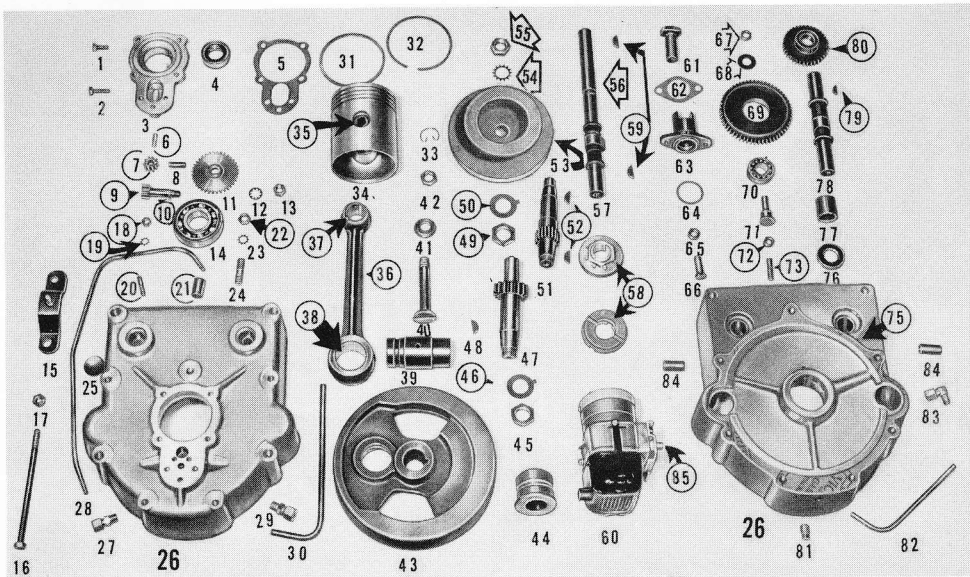


PLATE B

Crankcase Assembly

Photo No.	Part No.	Description	Price	Photo No.	Part No.	Description	Price
1	164-S	Bearing Cap Bolt Short	.02	22	206-N	Cylinder Stud Bolt Nut	.03
2	177-S	Bearing Cap Bolt Long	.03	23	305-W	Cylinder Stud Bolt Lock Washer	.01
3	L 103	Bearing And Pump Cap	3.16	24	L 303	Cylinder Stud Bolt	.12
4	L 126-A	Bearing Cap Double Seal	1.05	25	L 414	Expansion Plug	.09
5	L 125	Bearing Cap Gasket	.04	26	L 101-2	Crank Case	27.56
6	L 124	Bearing Cap Dowel	.05	27	L 707	Pump Discharge Connection	.17
7	L 422	Oil Pump Idle Gear	.89	28	L 813-B	Pump Discharge Line	.20
8	L 423	Idle Gear Stud	.12	29	L 814-A	Pump Supply Connection	.20
9	L 421	Oil Pump Master Gear	2.23	30	L 813-A	Pump Supply Line	.20
10	507-K	Oil Pump Master Gear Key	.02	31	LH 546	Oil Rings, O. S.	.37
11	L 419-A	Oil Pump Drive Gear	1.39			Oil Rings, Std.	.37
12	305-W	Oil Pump Master Gear Lk. Wshr.	.01	32	LH 547	Compression Ring, St.	.37
13	215-N	Oil Pump Master Gear Nut	.02			Compression Ring, O. S.	.80
14	L 115	Timing Pinion Bearing	3.55	33	LH 545	Piston Pin Lock	.01
15	L 224	Fan Housing Bracket	.58	34	LH 543	Piston Std. With Pin	5.69
16	L 116	Crank Case Bolt	.16			Piston .005 With Pin	5.69
17	205-N	Fan Housing Bolt Nut	.03			Piston .010 With Pin	5.69
18	202-N	Plunger Guide Stud Nut	.02			Piston .015 With Pin	5.69
19	303-W	Plunger Guide Lock Washer	.01			Piston .020 With Pin	5.69
20	L 405	Plunger Guide Stud	.12			Piston .025 With Pin	5.69
21	L 420-B	Oil Pump Bearing Bushing	.32			Piston .030 With Pin	5.69

Photo No.	Part No.	Description	Price
NS	802-A	Piston, Semi-finish, with pin	5.69
35	LH 544	Drive Pinion Shaft Set Screw	.12
36	L 306	Connecting Rod Complete	4.0
37	L 306-A	Connecting Rod Bushing Small	.4
38	L 306-B	Connecting Rod Bushing Large	.83
39	L 105	Crank Pin	2.55
40	L 106	Spreader Bolt	.40
41	L 107	Spreader Bolt Washer	.36
42	210-N	Spreader Bolt Nut	.04
43	L 104	Fly Wheel	4.90
44	L 114	Drive Pinion Bearing	1.90
45	L 112	Fly Wheel Nut	.13
46	L 113	Fly Wheel Nut Lock	.05
47	L 109	Drive Pinion Shaft	4.90
48	504-K	Drive Pinion Shaft Key	.02
49	L 112	Fly Wheel Nut	.13
50	L 113	Fly Wheel Nut Lock	.05
51	L 110	Timing Pinion Shaft	4.90
52	504-K	Fly Wheel Key	.02
53	5745	Fan Drive Pulley	4.75
54	309-W	Fan Drive Pulley Nut Lock	.02
55	218-N	Fan Drive Pulley Nut	.09
56	L 810	Magneto Shaft Extension	.62
57	L 402	Exhaust Cam Shaft	2.75
58	L 809	Magneto Coupling Complete	2.10
	L 809-F	Magneto Fiber Coupling	1.10
59	503-K	Magneto Shaft Extension Key (Also Exhaust Cam Shaft Key)	.02
60	L 808	Magneto	32.36
61	L 404	Valve Plunger	1.10
62	L 407-A	Valve Plunger Gasket	.05
63	L 403	Valve Plunger Guide	1.58
64	L 319	Sleeve Gasket	.03
65	L 409	Tappet Lock Nut	.09
66	L 408	Tappet Screws	.13
67	220-N	Bearing Stud Nut	.02
68	403-W	Bearing Stud Nut Washer	.01
NS	803-A	Inner Crank Case Set Screw	.12
69	L 415	Idler Gear	2.51
70	L 416	Idler Gear Bearing	1.71
71	L 417	Bearing Stud	.33
72	215-N	Crank Case Stud Nut	.02
73	L 118	Crank Case Stud Bolt	.12
75	L 210	Chassis Rear Gasket	.09
76	L 412	Cam Shaft Oil Seal	.54
77	L 406-O	Cam Shaft Bearing Bushing	.28
	L 406-I	Cam Shaft Bearing Bushing	.28
78	L 401	Intake Cam Shaft	2.75
79	503-K	Cam Shaft Gear Key	.0
80	L 413	Cam Shaft Gear	1.0
81	701-P	Crank Case Drain Plug	.06
82	L 813-C	Motor Supply Line	.20
83	L 814-H	90° Oil Line Elbow	.29
NS	L 814-E	Nipple	.12
84	L 120	Crank Case Dowell	.17
85	190-S	Magneto Bolt	.05
NS	5784	Drive Pulley Pin	.07

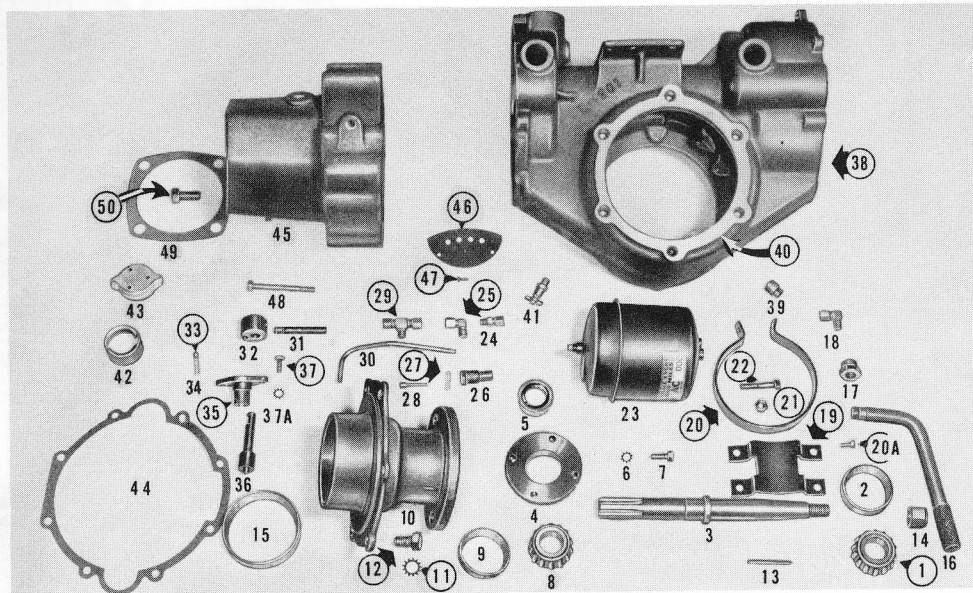


PLATE C

Chassis Assembly

Photo No.	Part No.	Description	Price	Photo No.	Part No.	Description	Price
1&8	RB 110-C	Axle Bearing (Cone)	2.05	10	L 203-D	Axle Housing	7.25
2&9	RB 110-R	Axle Bearing (Cup)	1.25	11	308-W	Axle Housing Bolt Lock Washer	.01
3	L 611	Axle	2.85	12	122-S	Axle Housing Bolt	.09
4	L 204-D	Bearing Cap	1.35	13	L 615	Axle Key	.05
5	L 221-A	Bearing Cap Oil Seal, Double	1.05	14	227-N	Axle Nut	.21
6	304-W	Bearing Cap Lock Washer	.01	16	L 822	Oil Strainer Body	1.10
7	126-S	Bearing Cap Bolt	.05	17	L 823	Oil Strainer Nut	.41

Photo No.	Part No.	Description	Price
18	L 814-F	Pump Supply Elbow	.28
19	L 828	Filter Bracket	.20
20	L 829	Oil Filter Mounting Band	.23
20-A	165-S	Filter Bracket Bolt	.02
21	201-N	Filter Band Nut	.02
22	149-S	Filter Band Bolt	.07
23	L 812	Oil Filter	2.75
24	L 707	Tube Connector	.17
25	L 814-D	Motor Supply Elbow	.20
26	L 815-A	Relief Valve Body	.61
27	L 815-D	Relief Valve Spring	.13
28	L 815-B	Relief Valve	.46
29	L 814-C	Discharge Line Tee	.35
30	L 813-C	Motor Supply Line	.20
31	L 732	Shipper Shaft Lever	.12
32	L 733	Locator Body	.80
33	L 809	Locator Ball	.02
34	L 815-D	Locator Spring .025"	.13
35	L 734	Shipper Shaft Guide	1.00
36	L 545	Shipper Shaft	1.20
37	164-S	Shipper Shaft Guide Bolt	.02
37-A	303-W	Shipper Shaft Bit. Lk. Wshr.	.01
38	L 201	Chassis Casting	34.18
39	705-P	Chassis Drain Plug	.07
	L 219-D	(.005) Bearing Cap Shim (ea.)	.10
		(.020) Bearing Cap Shim (ea.)	.14
		(.005) Axle Housing Shim (ea.)	.20
		(.020) Axle Housing Shim (ea.)	.25
40	L 220		
41	L 214	Oil Level Try Cock	.45
42	L 211	Chassis Oil Filter Neck	.17
43	L 212	Chassis Oil Filter Cap	.71
44	L 209	Chassis Front Gasket	.09
45	L 202	Advance Casting	14.40
46	L 202-A	Baffle Plate	.16
47	L 202-B	Baffle Plate Rivet	.01
48	L 207	Advance Casting Bolt	.14
49	5056	Attachment Gasket	.08
50	160-S	Attachment Bolt	.09

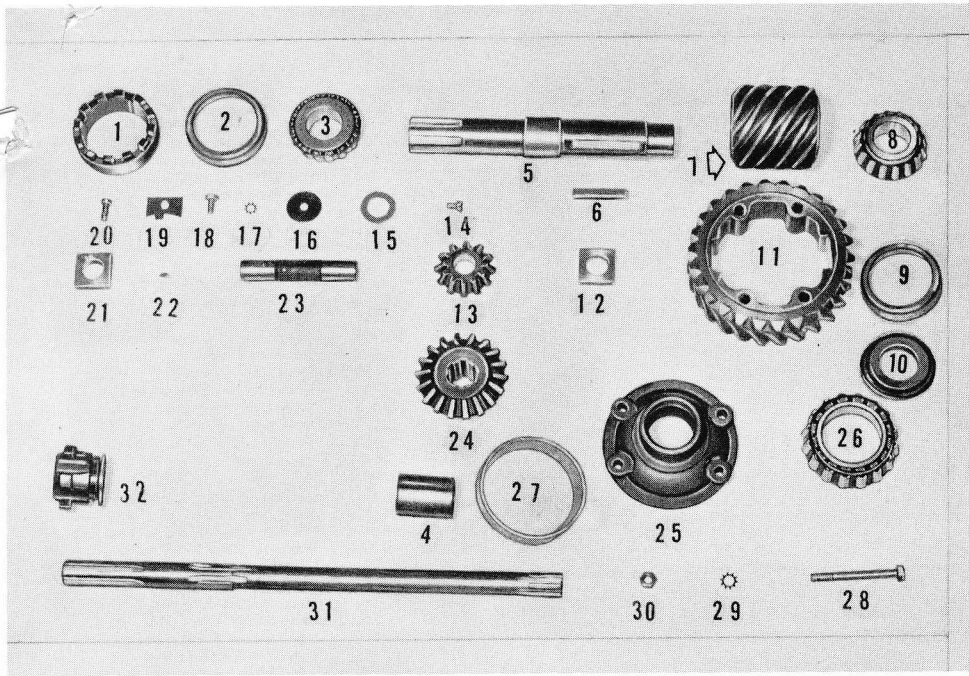


PLATE D

Internal Chassis and Worm Assembly

Photo No.	Part No.	Description	Price
1	L 507	Bearing Adjusting Nut	1.39
2, 9	L 522-R	Worm Shaft Bearing Cup	1.75
3, 8	L 522-C	Worm Shaft Bearing Cone	2.75
4	L 547	Worm Shaft Spacer	.35
5	L 521	Worm Shaft	4.12
6	L 608	Worm Key	.05
7	L 601	Worm	8.25
10	L 519	Rear Thrust Plate	1.10
11	L 602	Worm Gear	17.25
12	L 607-K	Driving Block (With Keyway)	.45
13	L 603	Bevel Pinion	3.05
14	107-S	Lock Screw	.07
15	L 735	Clutch Act. Shaft Oil Seal	.03
16	L 736	Oil Seal Washer	.03
17	303-W	Actuating Shaft Lock Washer	.01
18	165-S	Actuating Shaft Securing Screw	.02
19	L 523	Adjusting Nut Lock	.05
20	107-S	Gear Cup Screw	.07
NS	303-W	Gear Cup Screw Lock Washer	.01
21	L 607	Driving Block	.40
22	501-K	Pinion Pin Key	.02
23	L 605	Pinion Pin	.89
24	L 604	Bevel Gear	5.16
25	L 205	Differential Housing	2.23
26	RB 111-C	Differential Bearing Cone	3.35
27	RB 111-R	Differential Bearing Cup	2.05
28	L 206	Differential Housing Bolt	.14
29	304-W	Differential Housing Blt. Lk. Wshr.	.01
30	204-N	Differential Housing Nut	.02
31	L 543	Pinion Shaft	4.50
32	L 544	Clutch Dog	2.45

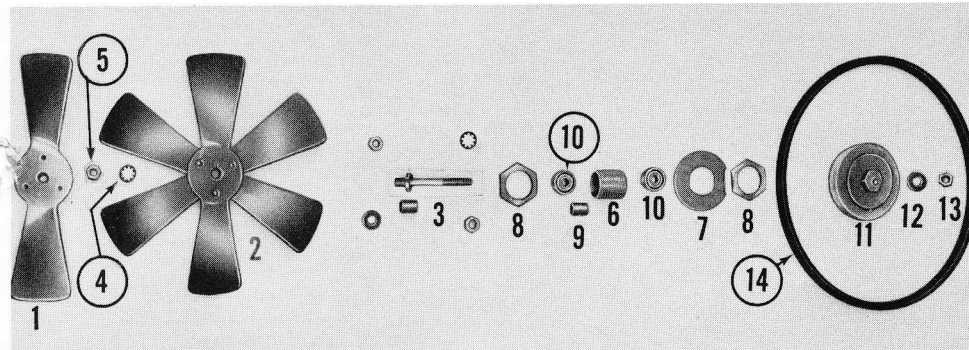


PLATE E

Fan Assembly

Photo No.	Part No.	Description	Price
1	L 805	Fan Blade	.30
2	L 805-AY	Fan Blade Assembly Comp. (Obsolete style shown, new type four blade style furnished)	1.15
NS	5138	Fan Blade Rivet	.01
3	5137	Fan Shaft	.51
4	305-W	Fan Nut Lock Washer	.01
5	206-N	Fan Securing Nut	.03
6	5133	Fan Bearing Race Retainer	1.21
7	L 830	Fan Retainer Adjusting Washer	.20
8	5134	Fan Bearing Lock Nut	.29
9	5165	Fan Bearing Spacer	.07
10	5139	Fan Ball Bearing	1.90
11	L 802	Fan Pulley	.80
12	401-W	Fan Pulley Jam Nut Washer	.01
13	204-N	Fan Pulley Jam Nut	.02
14	5163	Fan Belt	1.07

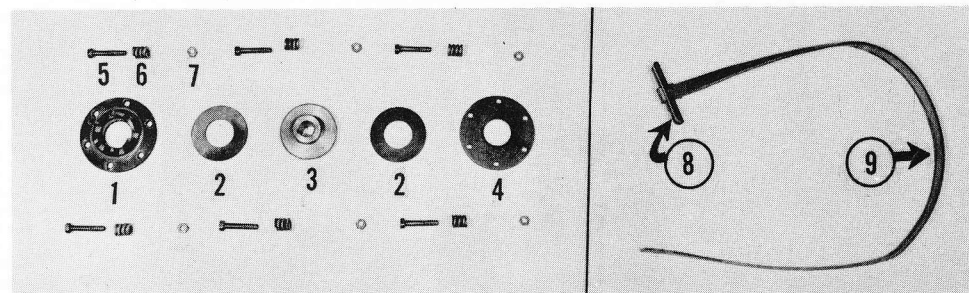


PLATE F

Slip Clutch and Starting Strap

Photo No.	Part No.	Description	Price
1	SC 30	Dog Plate	5.06
2	SC 34	Friction Washer	.24
3	SC 33	Drive Plate Keyway	1.33
NS	SC 33-S	Drive Plate, Spline, Rotary Mower & Power Brush	1.33
4	SC 32	Back Plate	.70
5	SC 37	Spring Bolt	.14
6	SC 35	Spring	.14
7	215-N	Spring Bolt Nut	.02
NS	232-N	Spring Bolt Lock Nut Sickle Mower only	.12
8	2802	Starting Strap Handle	.25
9	2801-L	Leather Strap	.73
	2801-LAY	Starting Strap Complete	.98

Air Deflector

Photo No.	Part No.	Description	Price
NS	L 838-A	Right Air Deflector	.45
NS	L 838-B	Left Air Deflector	.45
NS	L 839	Cylinder Head Air Deflector	.60
NS	L 840	Deflector Spacer	.08
NS	156-S	Screws for L 838-A & B	.02
NS	155-S	Long Cylinder Head Screw	.05

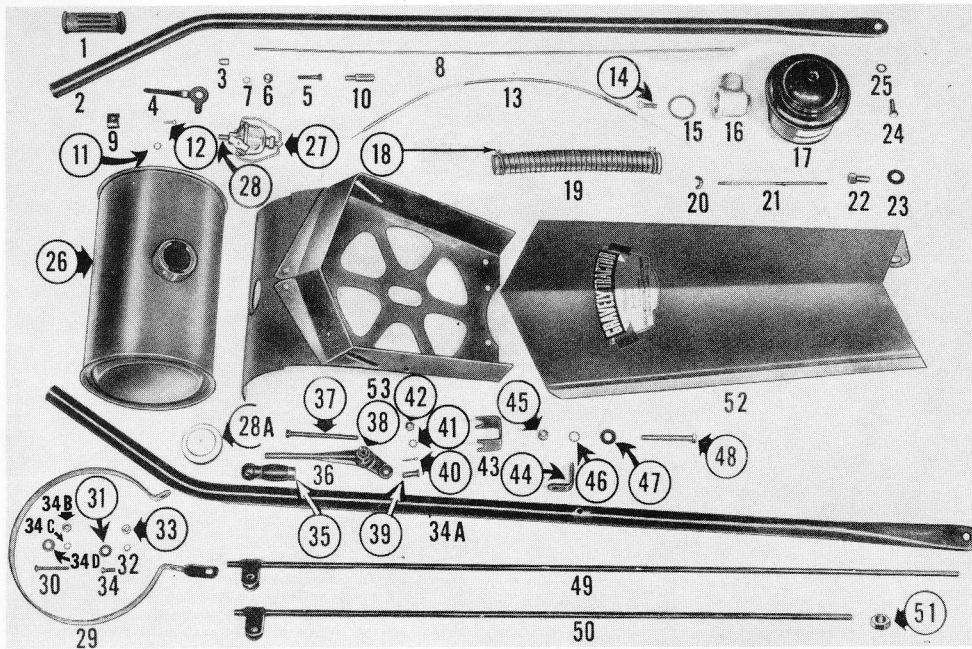


PLATE G

External Parts

Photo No.	Part No.	Description	Price	Photo No.	Part No.	Description	Price
1	L 725	Driving Handle Grip	.42	9	L 743	Throttle Stud	.09
2	L 724-L	Driving Handle, Left	2.90	11		Not Used	
3	L 741	Throttle Lever Hub	.07	12	102-S	Guide Clamp Securing Screw	.02
4	L 740	Throttle Lever	.22	13	L 729-A	Choke Wire	.13
5	154-S	Throttle Lever Pivot Bolt	.05		L 729-B	Choke Wire Guide	.15
6	214-N	Pivot Bolt Nut	.02	14	101-S	Air Filter Bracket Lock Screw	.02
7	401-W	Pivot Bolt Washer	.01	15	L 834	Gasket	.10
8	L 737	Throttle Wire	.09	NS	L 120	Tank Band Spacer	.17

Photo No.	Part No.	Description	Price
16	L 833	Air Filter Bracket	
17	L 832	Oil Bath Air Cleaner	4.88
18	L 836	Air Filter Hose Clamp	.10
19	L 835	Air Filter Hose	1.40
20	L 819-F	Wing Nut	.08
21	L 819-E	Air Filter Bolt	.12
22	L 819-D	Air Filter Bracket Bolt	.10
23	L 821	Hood Spacer	.05
24	111-S	Driving Handle Securing Bolt	.06
25	305-W	Driving Handle Sec. Bolt. Lk. Wshr.	.01
26	L 701	Tank	5.80
27	L 705	Gas Strainer Complete	1.59
28	L 814-E	Gas Filter Nipple	.12
28-A	2505	Tank Cap	.40
29	5164	Tank Band	.45
30	149-S	Tank Band Bolt Long	.07
31	401-W	Tank Band Bolt Washer	.01
32	303-W	Tank Band Bolt Lock Washer	.01
33	240-N	Tank Band Bolt Nut	.07
34	164-S	Tank Band to Fan Hsg. Bolt	.02
34-A	L 724-R	Driving Handle, Right	2.90
34-B	242-N	Nut, Tank Band to Fan Hsg. Bolt	.05
34-C	401-W	Washer, Tank Band to Fan Hsg. Bolt	.01
34-D	303-W	Washer, Tank Band to Fan Hsg. Bolt	.01
35	5167	Hand Lever Grip	.23
36	L 716	Clutch Hand Lever	.72
NS	L 716	Speed Selector Lever	.72
37	L 718	Hand Lever Pivot Bolt	.15
38	L 717	Hand Lever Pivot	.25
39	L 722	Clutch Rod Clevis Pin	.10
40	602-C	Clevis Cotter Pin	.01
41	401-W	Hand Lever Pivot Bolt Washer	.01
42	204-N	Hand Lever Pivot Bolt Nut	.02
43	L 728	Driving Handle Bracket	.40
44	L 742	Clutch Rod Brace	.10
45	205-N	Drive Handle Bracket Bolt Nut	.03
46	305-W	Drive Handle Brkt. Bolt. Lk. Wshr.	.01
47	403-W	Drive Handle Brkt. Bolt. Flat Wshr.	.01
48	131-S	Drive Handle Rear Bolt	.10
49	L 720-L	Clutch Rod, Long	.99
50	L 720-S	Clutch Rod, Short	.95
51	220-N	Clutch Rod Adjusting Nut	.02
52	L 820	Hood	1.60
53	L 222	Fan Housing	4.01
NS	L 705-H	Needle Valve Assembly	
NS	L 705-I	Glass Bowl	.2
NS	L 705-J	Bail Assembly	.32
NS	L 705-K	Screen	.13
NS	L 705-L	Filter Top	.40
NS	L 705-M	Clamping Cup Assembly	.20
NS	L 705-N	Cork Gasket	.04

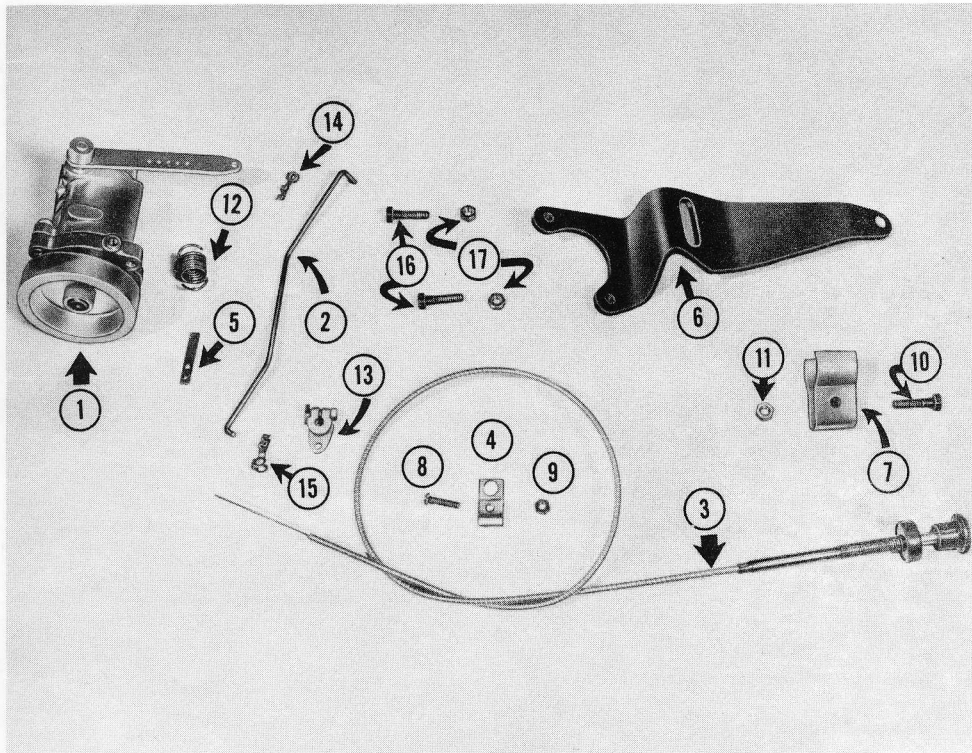


PLATE H

Governor

Photo No.	Part No.	Description	Price	Photo No.	Part No.	Description	Price
1	G 101	Governor	28.18	6	G 106	Mounting Bracket	1.38
2	G 102	Throttle Rod	.29	7	G 107	Control Bracket	.28
3	G 103	Boden & Wire Throttle Assy.	2.25	8	102-S	Boden & Wire Clip Screw	.02
4	G 104	Boden & Wire Throttle Assy. Clip	.17	9	207-N	Boden & Wire Clip Screw Nut	.02
5	G 105	Spring Connector	.09	10	177-S	Control Bracket Mounting Screw	.03

Photo No.	Part No.	Description	Price
11	201-N	Control Bracket Mounting Screw Nut	.02
12	SN-5	Spring	.17
13	AC-575	Carburetor Bellcrank	.40
14	C-598	Throttle Rod Clip R.H. (Thr. Rod at Lever)	.20
15	C-858	Throttle Rod Clip L.H. (Thr. Rod at Carb.)	.18
16	177-S	Governor to Mfg. Brkt. Screw	.03
17	201-N	Governor to Mfg. Brkt. Screw Nut	.02
NS	A2796	Spider and Shaft Assy.	4.03
NS	A3810	Body and Bushing Assy.	7.65
NS	G3168	Bushing for A-3810	.10
NS	G9021-15	Body for A3810	6.50
NS	A4328	Pulley Assembly	1.60
NS	A4504	Throttle Lever Assembly	1.15
NS	G3168	Bushing (Body at Drive Shaft)	.10
NS	G8075	Plug (Body at Rocker Shaft)	.60
NS	G8883	Weight Pin	.14
NS	G9121-8	Flange	7.12
NS	G9821-1	Swivel Yoke	1.80
NS	G9843	Thrust Sleeve	3.08
NS	G10126	Rocker Shaft	3.50
NS	X-455	Escutcheon Pin	.10
NS	X-121	Set Screw 1/4-20x1/2(Pulley)	.12
NS	X-1050	Lock Washer (Body to Flange)	.12
NS	X-1158	Groove-Pin 3/32x5/8 (Hub in Lever)	.10
NS	X1221	Oil Seal (Flange)	.56
NS	X-1244-1	Name Plate	
NS	X1300	Ball Bearing(Flange & Thrust Sleeve)	2.50
NS	X1413	Gasket	.10
NS	X1555	Oil Seal (Body at Rocker Shaft)	.23
NS	X1619	Rd. Hd. Screw(Body to Flange)	.17
NS	X1914	Internal Snap Ring (Flange)	.14
NS	X1915	External Snap Ring (Drive Shaft)	.10
NS	X1923	External Snap Ring (Drive Shaft)	.10
NS	X1983	Retaining Ring (Weight Pins)	.10